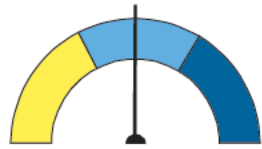


The State of Iowa is committed to delivering a high quality assessment for its students. The Iowa Statewide Assessment of Student Progress (ISASP) is aligned with the Iowa Core Academic Standards.

These results will provide educators, parents, and students important information about student performance that can be used to guide learning to best help each student.

### Overview of how FIRSTNAME performed on the ISASP

ENGLISH LANGUAGE ARTS TOTAL    Scale Score: **475**    Achievement Level: **PROFICIENT**



- ADVANCED (999 999)
- PROFICIENT (999 999)
- NOT YET PROFICIENT (999 999)

The English Language Arts (ELA) Total scale score is the combination of your Reading (999) and Language/Writing (999) scale scores.

A student at this level has the knowledge, skills and abilities to be proficient in ELA. This may include the ability to read, comprehend and analyze literary and informational texts. This may also include the ability to write coherent pieces that are appropriate, organized, and use standard English. Page two of this report provides information about your student's performance in the domains of ELA.

More information about your student's English Language Arts Total score can be found at <http://iowa.pearsonaccessnext.com/>.

MATHEMATICS    Scale Score: **410**    Achievement Level: **NOT YET PROFICIENT**

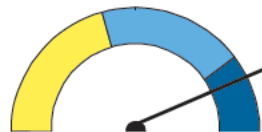


- ADVANCED (999 999)
- PROFICIENT (999 999)
- NOT YET PROFICIENT (999 999)

A student at this level has not demonstrated the knowledge, skills and abilities to be proficient in Mathematics. Page two of this report provides more information about your student's performance in the domains of Mathematics.

More information about your student's Mathematics score can be found at <http://iowa.pearsonaccessnext.com/>.

SCIENCE    Scale Score: **551**    Achievement Level: **ADVANCED**



- ADVANCED (999 999)
- PROFICIENT (999 999)
- NOT YET PROFICIENT (999 999)

A student at this level has the knowledge, skills and abilities to be advanced in Science. This includes using the Science and Engineering Practices and Cross Cutting Concepts and demonstrating an analytical understanding of life, physical, and earth and space science. The student communicates core ideas and concepts using complex practices of science. Page two of this report provides information about your student's performance in the domains of Science.

More information about your student's Science score can be found at <http://iowa.pearsonaccessnext.com/>.

DOMAIN SCORES

Domain scores can provide insight into your student's strengths and opportunities for improvement. In the tables below your student's domain scores are displayed as the percent correct in each category.



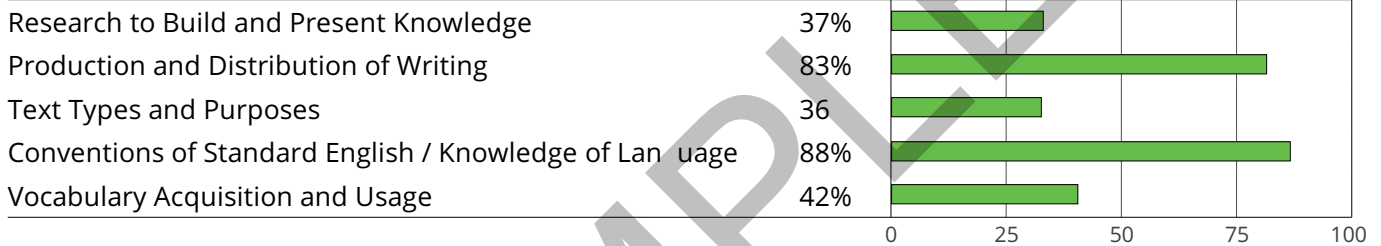
ELA-READING Domain Scores

Student's Percent Correct



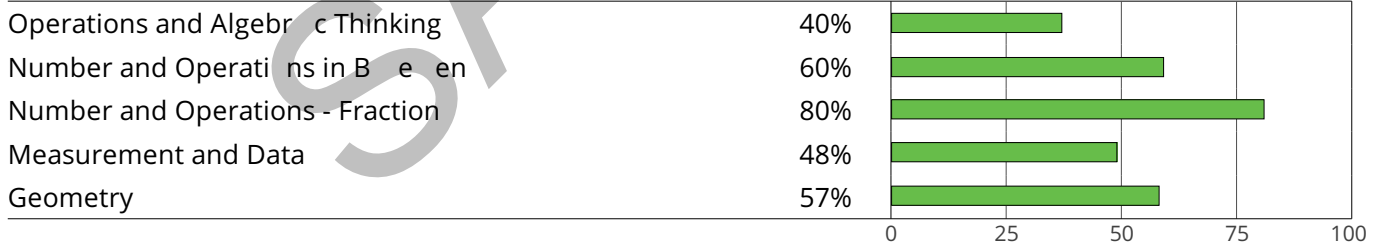
ELA-LANGUAGE/WRITING Domain Scores

Student's Percent Correct



MATHEMATICS Domain Scores

Student's Percent Correct



SCIENCE Domain Scores

Student's Percent Correct

